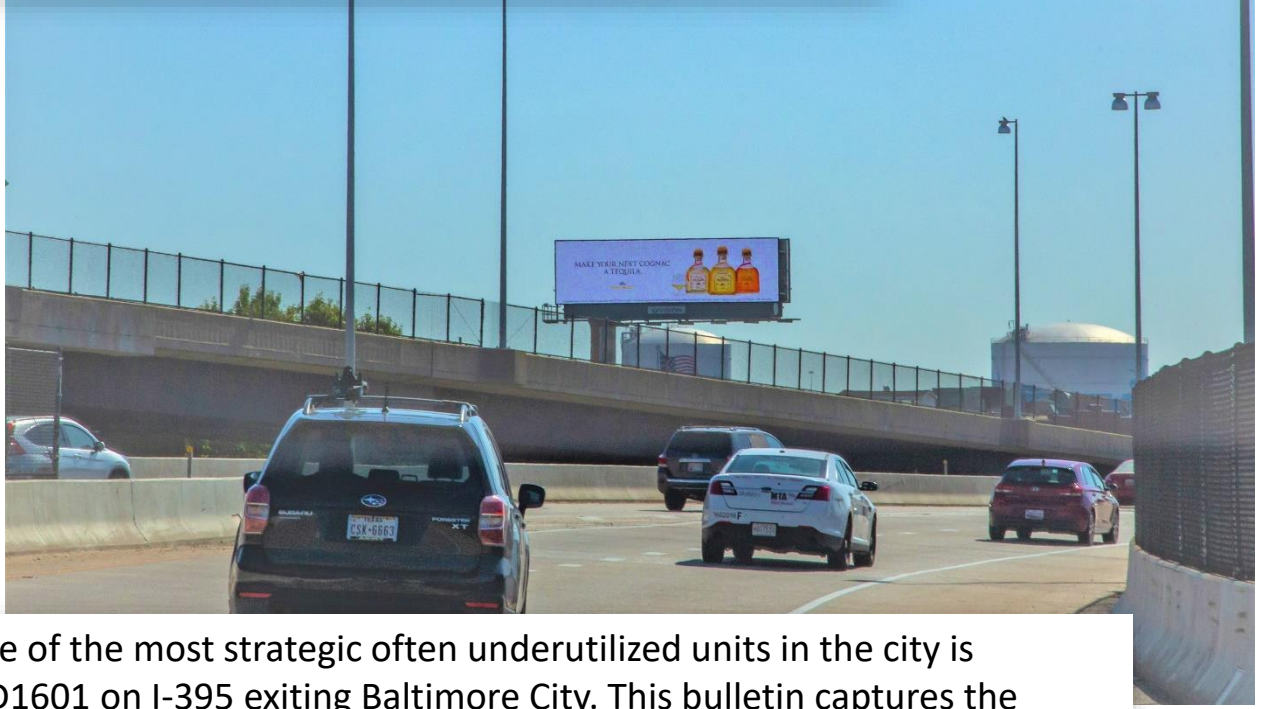


# Baltimore, MD

MD1601: I-395 @ South Martin Luther King Jr. Blvd., e/s, f/n



One of the most strategic often underutilized units in the city is MD1601 on I-395 exiting Baltimore City. This bulletin captures the motoring public leaving the sports complexes, downtown business district, entertainment venues and Inner Harbor / Harbor East area funneling to both North and South I-95. This LHR digital always over-delivers on rotations.

<b>Size:</b>	14'H x 48'W
<b>Materials:</b>	Digital
<b>Facing:</b>	North
<b>Illumination:</b>	Yes
<b>Weekly Impressions:</b>	<b>230,174</b>
<b>LAT:</b>	39.275984
<b>LONG:</b>	-76.61928
<b>TAB ID:</b>	30801276

