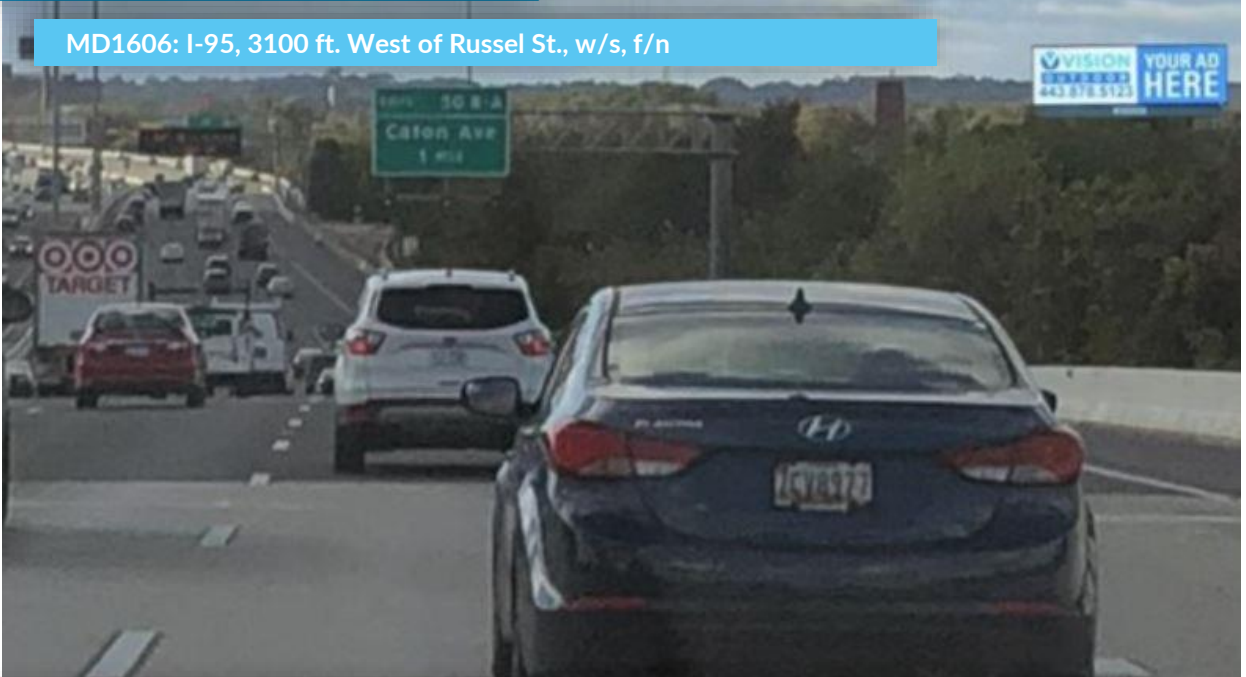


Baltimore, MD

MD1606: I-95, 3100 ft. West of Russel St., w/s, f/n



This spectacular bulletin captures southbound traffic on I-95 coming from the Inner Harbor, M&T Bank Stadium, Camden yards and downtown Baltimore. This corridor also provides a direct connection for commuter and tourist traffic alike traveling to Baltimore Washington International Airport as well as Washington, DC.

Size:	14'H x 48'W
Materials:	Static
Facing:	North
Illumination:	Yes
Weekly Impressions:	718,788
LAT:	39.271538
LONG:	-76.644213
TAB ID:	30974737

